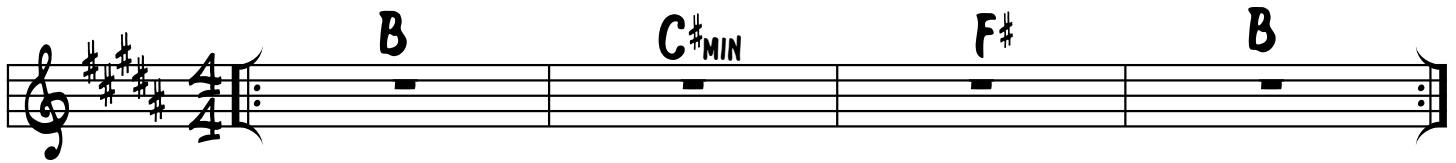


116 BPM

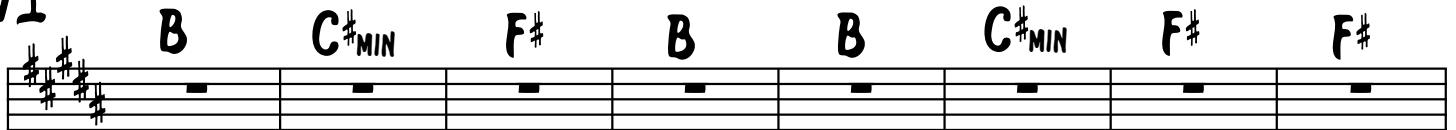
KING OF THE ROAD

ROGER MILLER

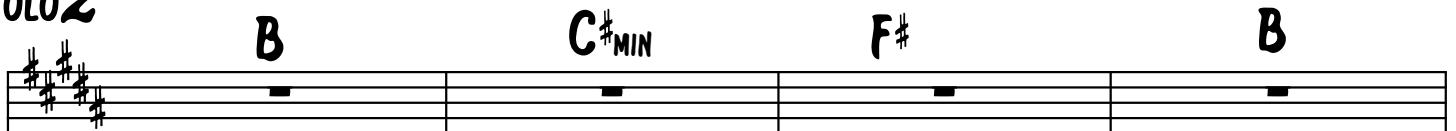
SOLO1



V1



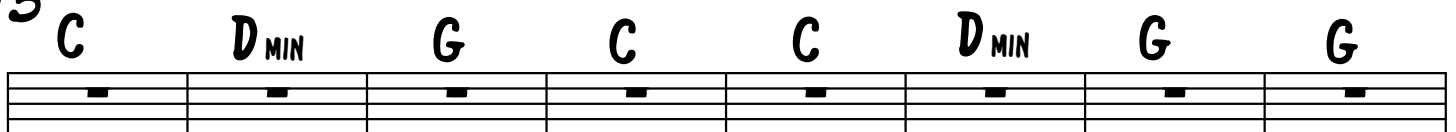
SOLO2



V2




V3



2 **SOLO3**

KING OF THE ROAD

C **D_{MIN}** **G** **C** **C** **D_{MIN}** **G** **C**



A musical staff with a treble clef and a key signature of one flat (Bb). The staff contains eight measures, each with a single chord indicated by a horizontal line on a specific staff line. The chords are: C (line 1), D_{MIN} (line 2), G (line 3), C (line 4), C (line 5), D_{MIN} (line 6), G (line 7), and C (line 8).

V1B

C **D_{MIN}** **G** **C** **C** **D_{MIN}** **G** **G**



A musical staff with a treble clef and a key signature of one flat (Bb). The staff contains eight measures, each with a single chord indicated by a horizontal line on a specific staff line. The chords are: C (line 1), D_{MIN} (line 2), G (line 3), C (line 4), C (line 5), D_{MIN} (line 6), G (line 7), and G (line 8).

C **D_{MIN}** **G** **C** **C** **F** **G** **C**



A musical staff with a treble clef and a key signature of one flat (Bb). The staff contains eight measures, each with a single chord indicated by a horizontal line on a specific staff line. The chords are: C (line 1), D_{MIN} (line 2), G (line 3), C (line 4), C (line 5), F (line 6), G (line 7), and C (line 8).

SOLO4

C **D_{MIN}** **G** **C** **FINE**



A musical staff with a treble clef and a key signature of one flat (Bb). The staff contains five measures, each with a single chord indicated by a horizontal line on a specific staff line. The chords are: C (line 1), D_{MIN} (line 2), G (line 3), C (line 4), and FINE (line 5). The staff ends with a double bar line.