

DON'T BABY ME

INTRO

Intro musical notation in G major (one sharp) and 4/4 time. The first staff contains four measures with chords B⁷, D(ADD9), B⁷, and D(ADD9). The second staff contains six measures with chords B⁷, D(ADD9), B⁷, D(ADD9), E⁹, and F^{#7}(#9).

V1,2

V1,2 musical notation in G major and 4/4 time. The staff contains eight measures, all of which are whole rests, with the final measure labeled with the chord F^{#MIN}7.

JAM1,2

JAM1,2 musical notation in G major and 4/4 time. The first staff contains four measures with chords B⁷, D(ADD9), B⁷, and D(ADD9). The second staff contains six measures with chords B⁷, D(ADD9), B⁷, D(ADD9), E⁹, and F^{#7}(#9).

BABY1,2

BABY1,2 musical notation in G major and 4/4 time. The first staff contains four measures, all of which are whole rests. The second staff contains four measures: the first two are whole rests, and the last two contain a melodic line starting on B4, moving to C#5, D5, and E5, with a slur over the last two notes. Chords B and F^{#7}(#9) are indicated above the staff.

C1,2

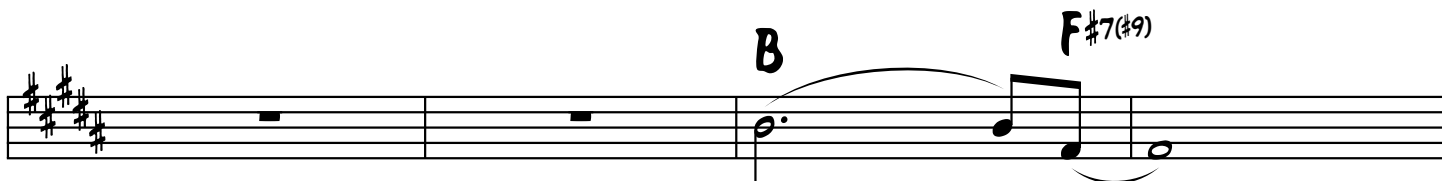
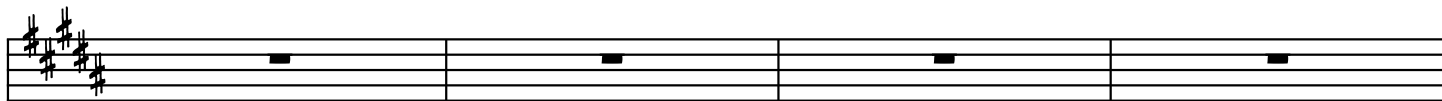
C1,2 musical notation in G major and 4/4 time. The staff contains four measures, all of which are whole rests, with chords B, E, B, and E indicated above the staff. The piece concludes with a double bar line and the instruction D.C. AL FINE.

BREAKDOWN

DON'T BABY ME



BABY 3



C3

