

GOOD THING

INTRO

Measures 1-4 of the Intro section. The key signature has three flats (Bb, Eb, Ab) and the time signature is 4/4. The notes are whole notes.

Measure	Chord
1	A ^b
2	A ^b
3	A ^b /G
4	A ^b /G

Measure	Chord
1	A ^{b7} /G ^b
2	A ^{b7} /G ^b
3	D ^b
4	D ^b

V1,2

Measures 1-4 of the V1,2 section. The key signature has three flats (Bb, Eb, Ab) and the time signature is 4/4. The notes are whole notes. Measure 4 ends with a repeat sign.

Measure	Chord
1	A ^b
2	A ^b
3	A ^b /G
4	A ^b /G

Measure	Chord
1	A ^{b7} /G ^b
2	A ^{b7} /G ^b
3	D ^b
4	D ^b

P1,2

Measures 1-4 of the P1,2 section. The key signature has three flats (Bb, Eb, Ab) and the time signature is 4/4. The notes are whole notes. Measure 4 ends with a repeat sign.

Measure	Chord
1	D ^b _{MAJ7}
2	D ^b _{MAJ7}
3	C ⁷
4	C ⁷

C1,2

Measures 1-4 of the C1,2 section. The key signature has three flats (Bb, Eb, Ab) and the time signature is 4/4. The notes are whole notes.

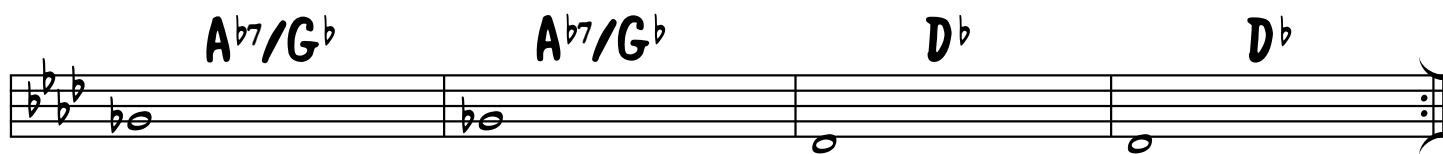
Measure	Chord
1	F _{MIN}
2	F _{MIN}
3	F _{MIN} ^(MAJ7) /E
4	F _{MIN} ^(MAJ7) /E

Measure	Chord
1	A ^b /E ^b
2	A ^b /E ^b
3	B ^b
4	B ^b

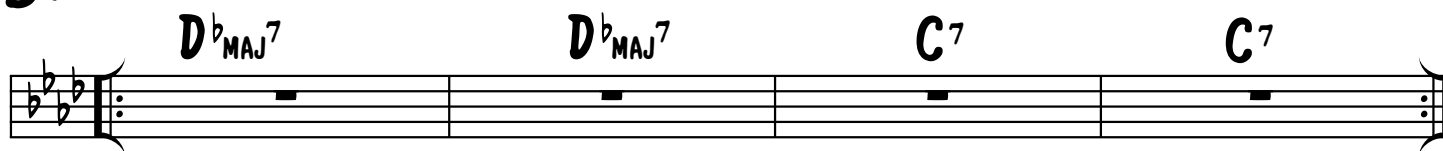
Measure	Chord
1	D ^b
2	D ^b
3	D ^b _{MAJ7}
4	D ^b _{MAJ7} D.S. AL FINE

1/2 TIME SWING

GOOD THING



P3 (NORMAL METER)



P4

