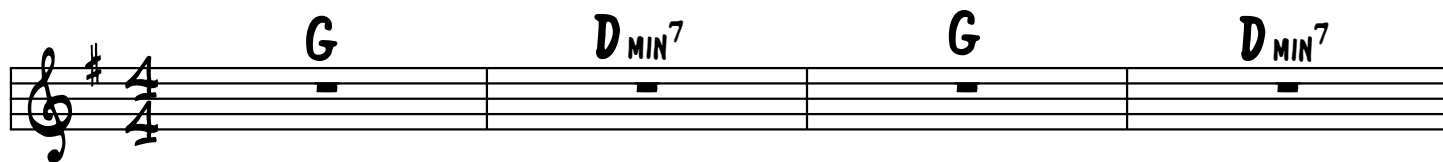
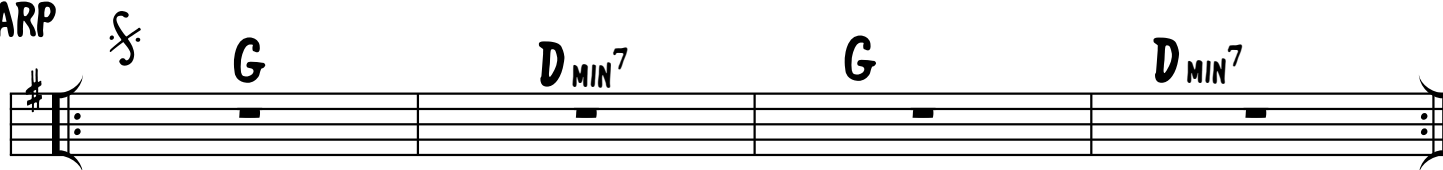


## PUMPKIN PIE

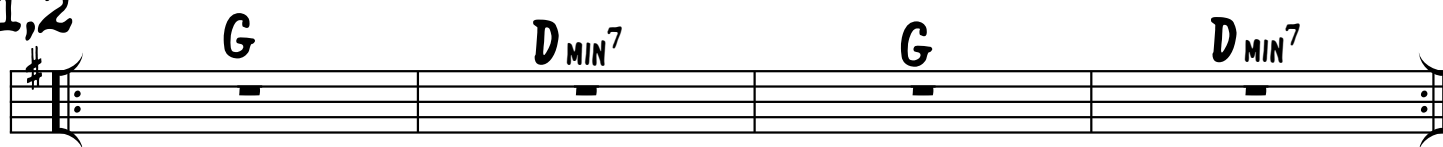
## INTRO: GUITAR



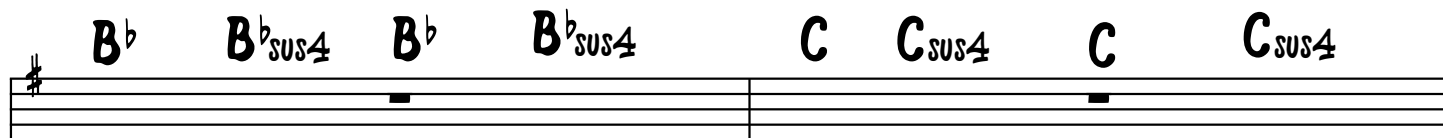
## HARP



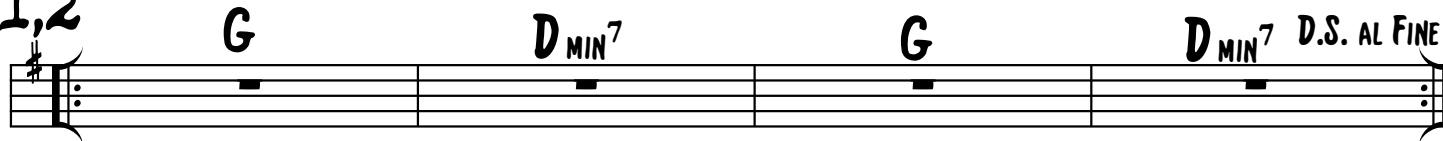
## V1,2



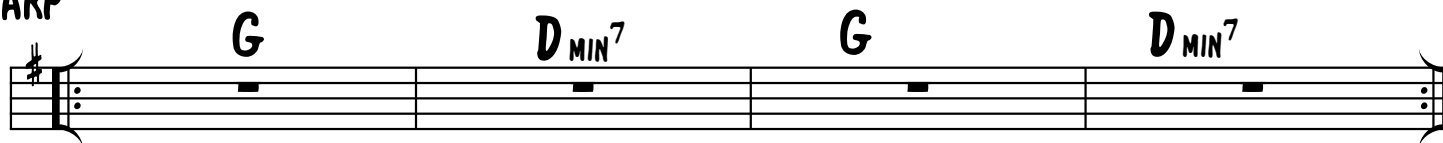
## P1,2



## C1,2



## HARP



2 ACCENTS

PUMPKIN PIE

Musical notation for the second system of the song "Pumpkin Pie". The notation is on a single staff with a treble clef and a key signature of one sharp (F#). The melody consists of the following notes: G4 (quarter note), D4 (quarter note), G4 (quarter note), D4 (quarter note), G4 (half note), G4 (quarter note), and a final G4 (quarter note) followed by a whole rest. The lyrics "ACCENTS" are written above the first two notes, and "PUMPKIN PIE" is written above the next four notes. The word "FINE" is written above the final note. The notes are: G, D, G, D, G, G, G.

